

APPENDIX II

TOPOGRAPHIC MAP

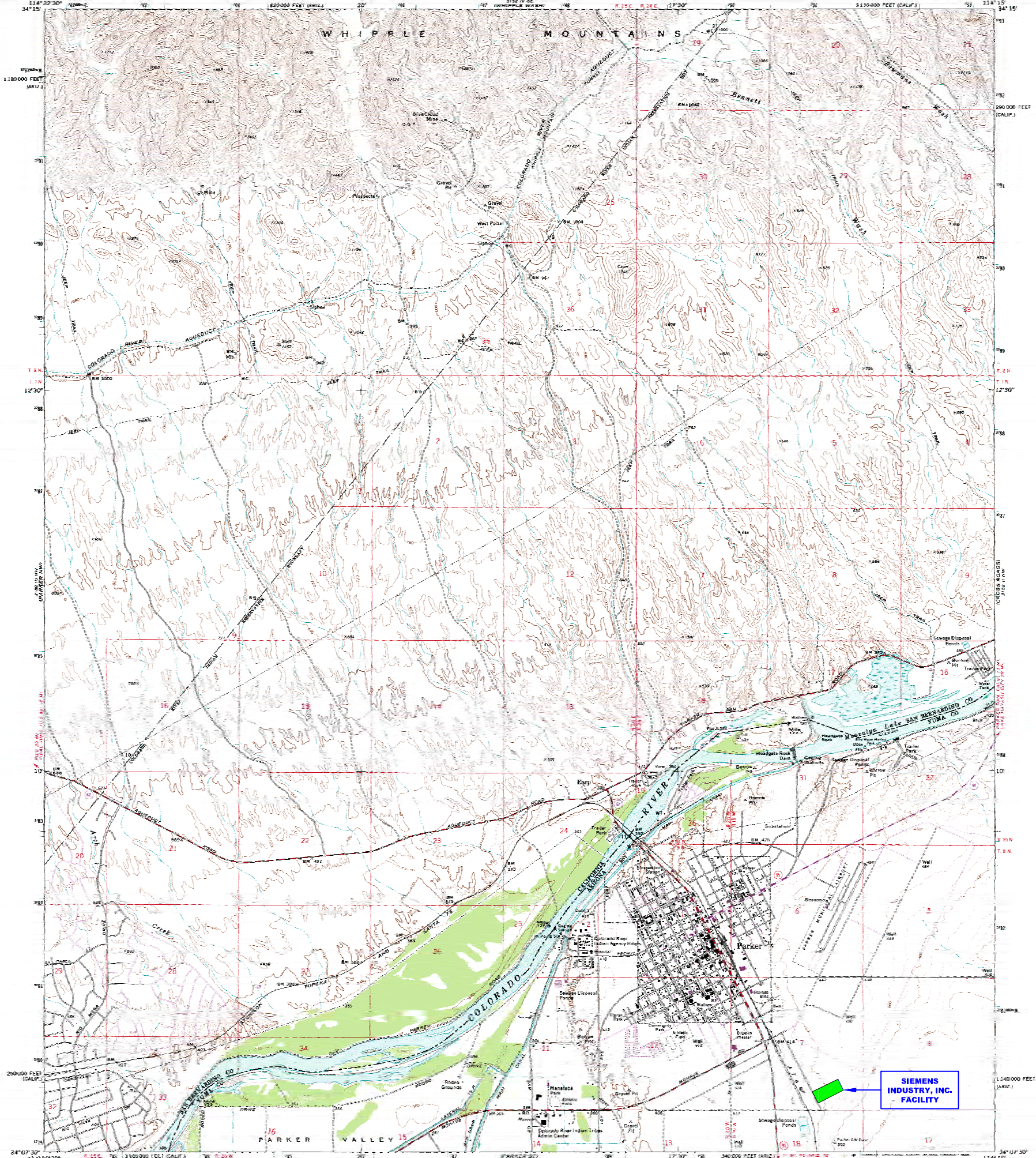
FLOOD INSURANCE MAP FOR THE COLORADO
RIVER INDIAN RESERVATION

PERIPHERAL LAND USE STUDY DIAGRAM FOR THE
COLORADO RIVER INDIAN TRIBE LANDS

WIND ROSE

LEGAL BOUNDARIES

Revision 1
April 2012



**SIEMENS
INDUSTRY, INC.
FACILITY**

Maped, edited, and published by the Geological Survey
Control by 1:50,000 and 1:250,000
Topography by photogrammetric methods from aerial
photographs taken 1969. Field checked 1970.
Polyconic projection, 1927 North American datum,
10,000-foot grid based on California coordinate system, zone 5,
and Arizona coordinate system, west zone,
1000-meter Universal Transverse Mercator grid ticks,
zone 11, shown in blue.
To place on the predicted North American Datum 1983
move the projection lines 7.2 meters east
as shown by dashed corner ticks.
Where omitted, land lines have not been established.

SCALE 1:25,000
CUNNINGHAM HORIZONTAL FOOT
DOTTED LINES REPRESENT 10-FOOT CONTOURS
NATIONAL GEODYSIC VERTICAL DATUM OF 1929

ROAD CLASSIFICATION
Primary highway, hard surface
Secondary highway, hard surface
Lightly road, hard surface
Unimproved road
U.S. Route
State Route
Interstate Route

PARKER, ARIZ.—CALIF.
1:250,000
PHOTOREVISED 1975
DMA 3125 11 95—LITHO 3125

NOTES:

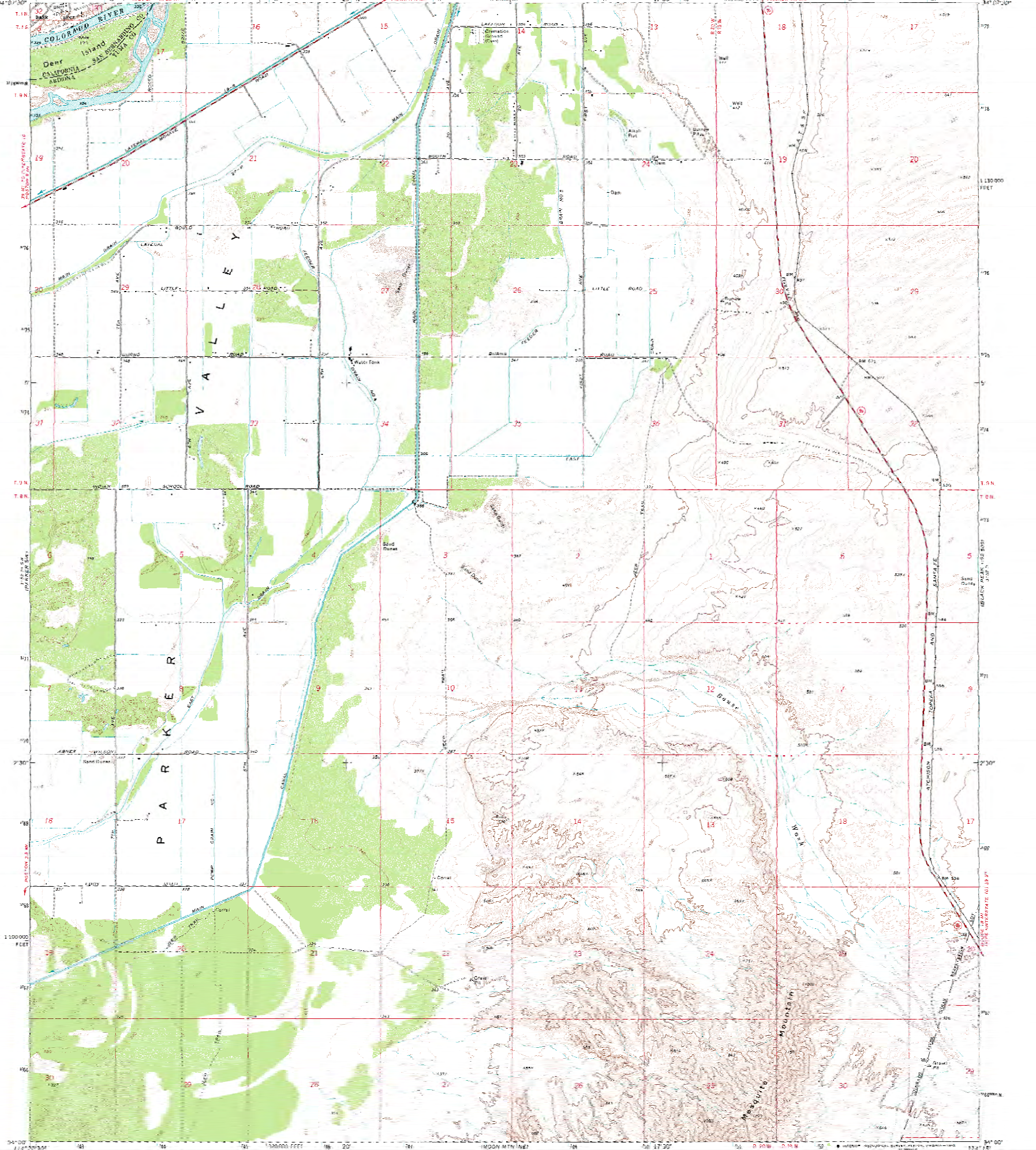
1. SEE ATTACHED SIEMENS INDUSTRY, INC. DRAWING D-14789-02 FOR DETAILED LOCATION OF S01, S02, AND X03.
2. THERE ARE NO INJECTION WELLS ASSOCIATED WITH THIS FACILITY.
3. THERE ARE NO SPRINGS, DRINKING WATER WELLS, NOR SURFACE WATER BODIES LOCATED WITHIN 1/4 MILE OF THIS FACILITY.

REV.		DATE	REVISION DESCRIPTION	DRAWN	CHK'D	ENG'R	CUSTOMER: SIEMENS INDUSTRY, INC. LOCATION: 2523 MUTAHAR ST. PARKER, AZ 85344 PROJECT No. DRAWN: JBE 1/22/07 CHK'D: KEM 1/22/07 ENG'R:	TITLE: SIEMENS INDUSTRY, INC. Parker, AZ U.S.G.S. SURVEY - PARKER, AZ TOPOGRAPHIC MAP	DWG No. C-100604 SHEET No. 1 of 2 REV. 1
1	3/15/12	NAME CHANGED TO SIEMENS INDUSTRY, INC.	JBE	KEM		PLOT SCALE: AS NOTED DO NOT SCALE DRAWING THIS DRAWING IS THE PROPERTY OF SIEMENS AND CANNOT BE REPRODUCED OR DELIVERED TO OTHERS WITHOUT THE EXPRESS WRITTEN PERMISSION OF SIEMENS INDUSTRY, INC.			

**SIEMENS
INDUSTRY, INC.
FACILITY**

**PARKER SE QUADRANGLE
ARIZONA-CALIFORNIA
7.5 MINUTE SERIES (TOPOGRAPHIC)**

**UNITED STATES
DEPARTMENT OF THE INTERIOR
GEOLOGICAL SURVEY**



Map made, edited, and published by the Geological Survey.
Control by U.S.G.S. and USCGS.
Topography by photogrammetric methods from aerial
photographs taken 1969. Field checked 1970.
Projection: 1927 North American datum
100,000-foot grid based on Airy's spheroid system, equal area,
1000 meter Universal Transverse Mercator grid ticks,
zone 11, shown in blue.
To place on the Pacific North American Datum 1983,
convert the projection into 1 meter, scale 300,
72 meters east, as shown by dashed corner ticks.

SCALE 1:24,000

CENTIMETER INTRINSIC 20 FEET
DOTTED LINES REPRESENT 5 FOOT CONTOURS
NATIONAL GEODESIC VERTICAL DATUM OF 1988

ROAD CLASSIFICATION
Primary Highway: light duty road, hard or improved surface
Secondary Highway: unpaved road
Hard surface
Interstate Route
U.S. Route
State Route

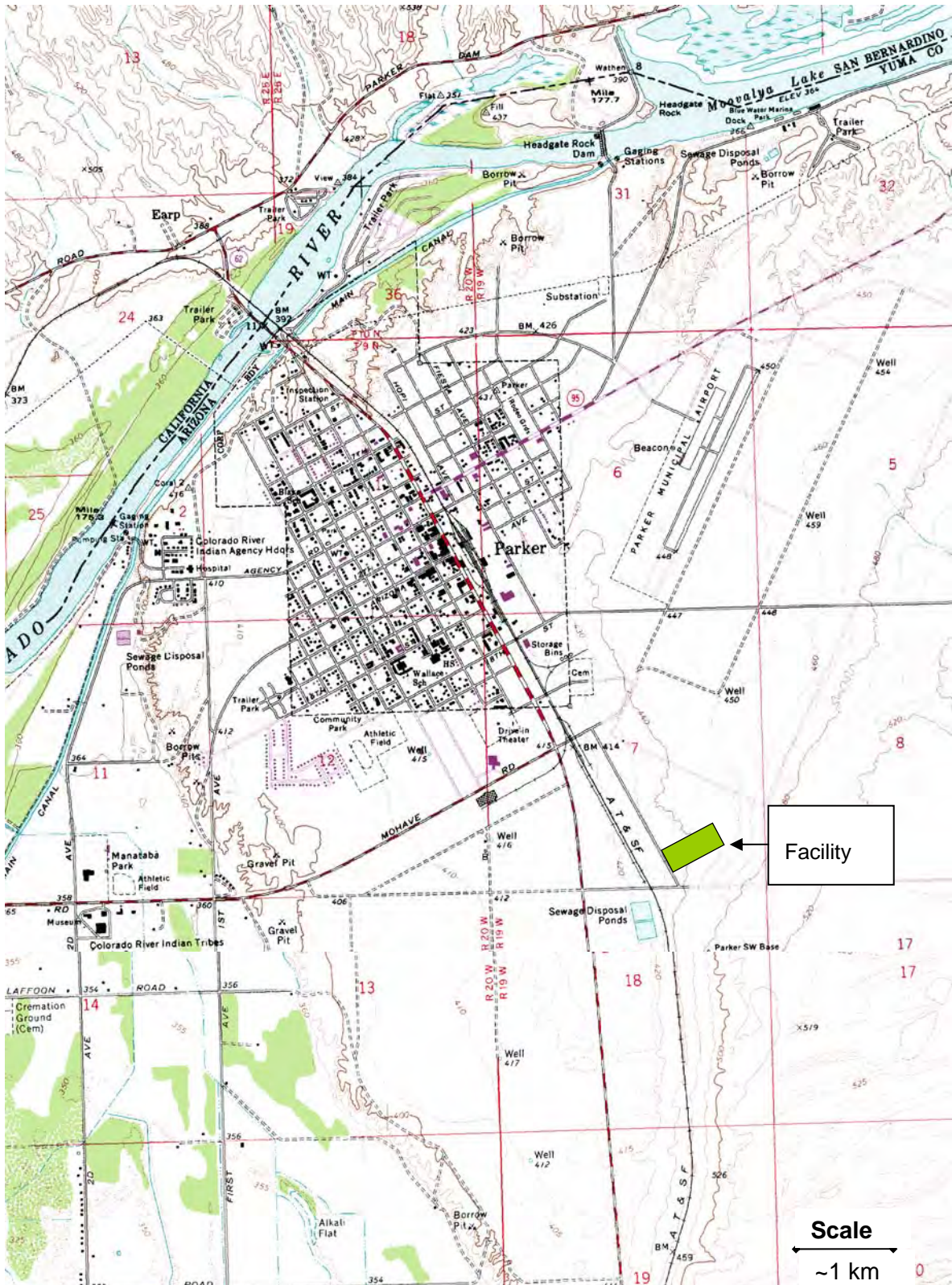
PARKER SE, ARIZ.-CALIF.
753400 34114107.5
1870
GSA 3100 10 SE-REVISED 1988

- NOTES:**
- SEE ATTACHED SIEMENS WATER TECHNOLOGIES CORP. DRAWING D-14789-02 FOR DETAILED LOCATION OF S01, S02, AND X03.
 - THERE ARE NO INJECTION WELLS ASSOCIATED WITH THIS FACILITY.
 - THERE ARE NO SPRINGS, DRINKING WATER WELLS, NOR SURFACE WATER BODIES LOCATED WITHIN 1/4 MILE OF THIS FACILITY.

REV.	DATE	REVISION DESCRIPTION	DRAWN	CHK'D	ENG'R
1	3/15/12	NAME CHANGED TO SIEMENS INDUSTRY, INC.	JBE	KEM	

CUSTOMER: SIEMENS INDUSTRY, INC.	SIEMENS INDUSTRY, INC. Parker, AZ		
LOCATION: 2523 MUTAHAR ST. PARKER, AZ 85344			
PLOT SCALE: AS NOTED DO NOT SCALE DRAWING	TITLE: U.S.G.S. SURVEY - PARKER SE, AZ TOPOGRAPHIC MAP		
PROJECT No.:			
DRAWN: JBE 1/22/07 CHK'D: KEM 1/22/07 ENG'R:			
DWG No. C-100604		SHEET No. 2 of 2	REV. 1

Facility Location



Peripheral Land Use Study: Colorado River Indian Tribes Lands

Peripheral Land Use Study

Colorado River Indian Tribes' Lands

Town of Parker, Arizona

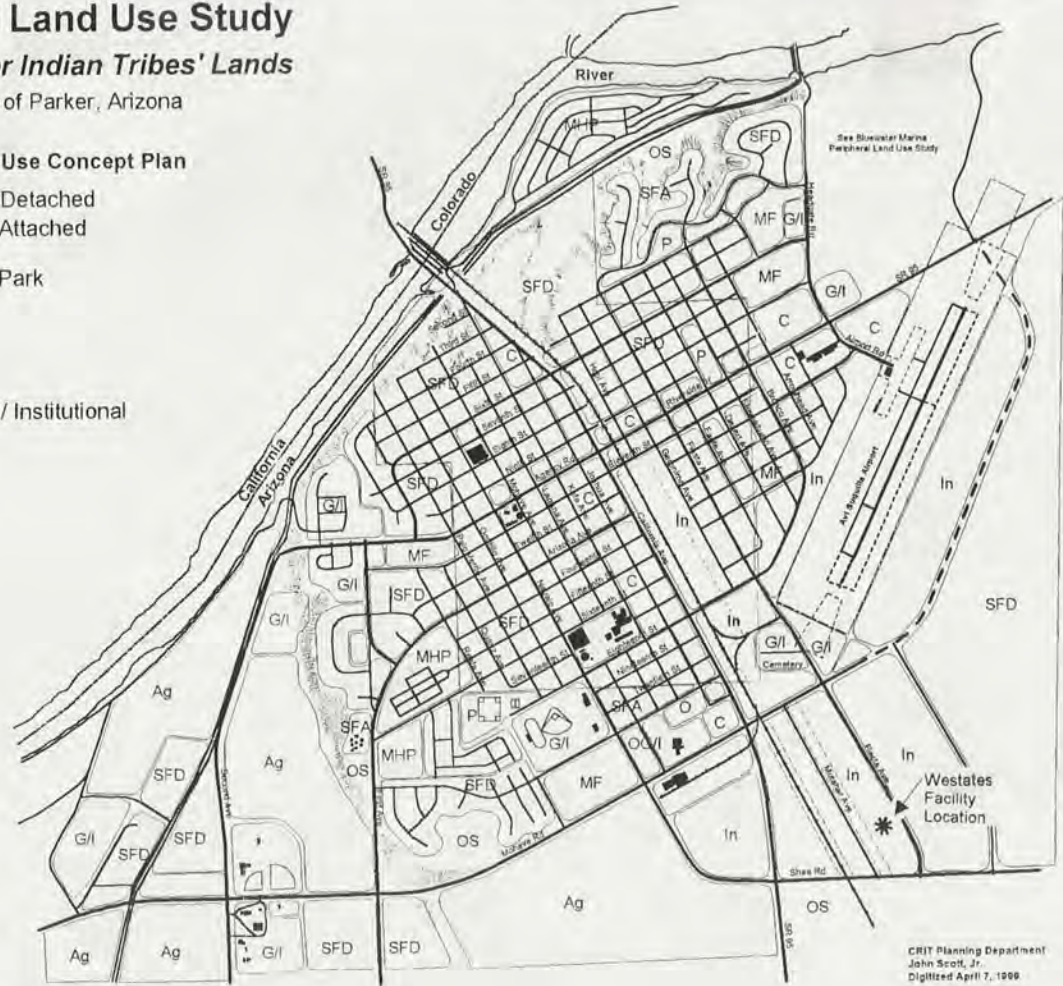
Preliminary Land Use Concept Plan

-  Single Family Detached
-  Single Family Attached
-  Multi-Family
-  Mobile Home Park
-  Commercial
-  Office
-  Industrial
-  Park
-  Governmental/ Institutional
-  Agricultural

11

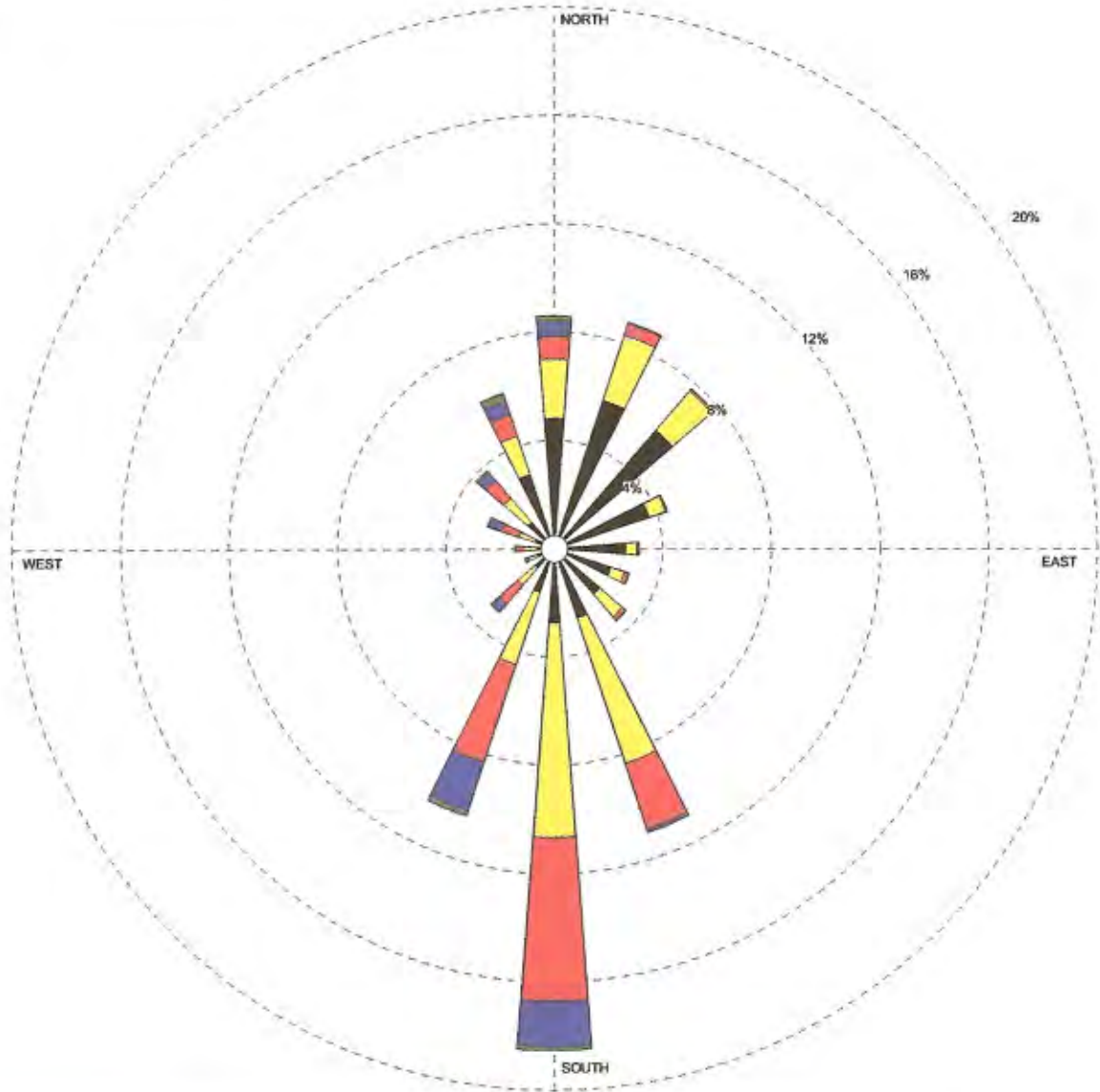


North
Not To Scale



CRIT Planning Department
John Scott, Jr.
Digitized April 7, 1999

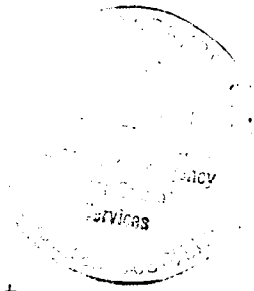
FIGURE 2. Windrose for Parker, Arizona 1997 - 2001



<p>Wind Speed (m/s)</p>	<p>MODELER CHV</p>		<p>COMPANY NAME Focus Environmental, Inc.</p>
	<p>DISPLAY Wind Speed</p>	<p>UNIT m/s</p>	<p>SOURCE Arizona Meteorological Network (AZMET) - Parker, Arizona</p>
	<p>AVG. WIND SPEED 2.64 m/s</p>	<p>CALM WINDS 2.01%</p>	
	<p>ORIENTATION Direction (blowing from)</p>	<p>PLOT YEAR-DATE-TIME 97 98 99 00 01 January 1 - December 31 Midnight - 11 PM</p>	<p>PROJECT/PLOT NO. FIGURE 2</p>

March 2, 1990

COLORADO RIVER INDUSTRIAL PARK
BEING PART OF SECTION 7, T10N, R19W
G11A, SALT RIVER BASE MERIDIAN
COLORADO RIVER INDIAN RESERVATION



Starting from the intersection point of Mohave Road and Mutabar Street, existing survey monuments, Thence S27°11'37"E, 2615.12 feet. Thence N62°49'23"E, 50.00 feet to the Northwest corner Lot 13, and point of beginning. Thence N62°49'23"E, 150.00 feet, to the Northeast corner Lot 13. Thence S27°11'37"E, 200.00 feet to the Southeast corner Lot 13. Thence S27°11'37"E, 200.00 feet to the Southeast corner Lot 14, Thence S62°49'23"W, 150.00 feet to the Southwest corner Lot 14. Thence N27°11'37"W, 200.00 feet, along road right away, to the Northwest corner Lot 14. Thence N27°11'37"W, 200.00 feet, along right away, to point of beginning. The area contains a calculated area of 1.38 acres.

Thence from the Northeast corner Lot 13, N62°49'23"E, 939.00 feet, to the Northeast corner, 8.62 acre lot. Thence S27°11'37"E, 400 feet to the Southeast corner, 8.62 acre lot. Thence S62°49'23"W, 939.00 feet to the Southeast corner, Lot 14. The area contains a calculated area of 8.62 acres.

Thence from the Northeast corner Lot 13, soil sample number 3, bears N75°27'59"E, 562.95 feet. Soil sample number 6 bears N78°12'58"E, 318.20 feet.

Thence from the Northeast corner, 8.62 acre lot, soil sample number 4, bears N80°38'55"W, 239.20 feet.

Thence from the Southeast corner Lot 14, soil sample number 2, bears N7°44'59"E, 190.35 feet.

Thence from the Southwest corner Lot 14, soil sample number 1, bears N24°12'28"E, 131.70 feet. Fire hydrant bears N20°30'06"W, 28.60 feet.

Thence from the Northwest corner Lot 14, soil sample number 5, bears N29°48'40"E, 65.30 feet.

ENGINEER'S CERTIFICATE: I certify that I have examined this plot of the Survey and found that it conforms with the data from which it was drawn and that I am satisfied the map is technically correct.

Reginald Fisher

603-119-91